

# K-Othrine® 25 WG

## A Synthetic Pyrethroid Insecticide for Public Health Use Against Mosquitoes

### The New Residual Pyrethroid Formulation for Malaria Control

K-OTHRINE 25 WG is a highly effective insecticide in water dispersible granule form for application to wall surfaces. It contains deltamethrin, a highly active pyrethroid insecticide which provides effective protection against malaria, leishmaniasis and Chagas vectors.

### Product Features

- ▶ Broad spectrum of activity that also controls other pests inside the house such as bedbugs and flies
- ▶ Long lasting control
- ▶ Formulation rapidly disperses in water forming an aqueous suspension of deltamethrin
- ▶ Smallest unit dose sachets in the market which also reduces cost in transportation and storage
- ▶ Easy to mix, the sachet is simply emptied directly into the sprayer already filled with water. It is closed, pressurized, shaken and ready to use
- ▶ Minimal wear on spray nozzles and no blockages
- ▶ Odorless and non-staining



A Quality Product From  
Bayer Environmental Science



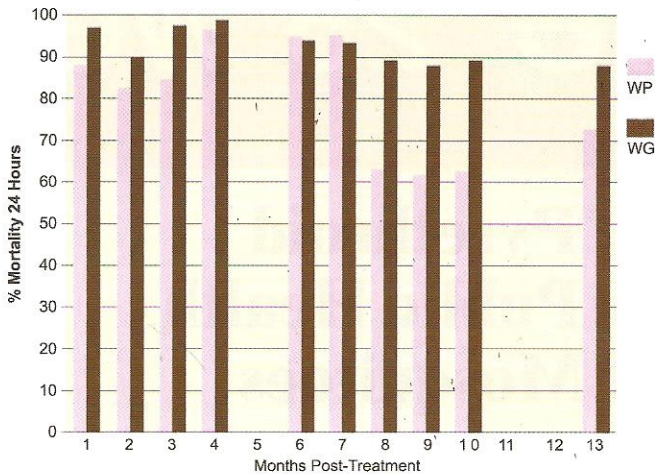
Marketed Nationwide By:  
**ALOG & Company, Inc.**

UNIT 301 ALABANG BUSINESS TOWER  
1216 ACACIA AVENUE, MADRIGAL BUSINESS  
PARK  
TEL: 4789675, 4788466





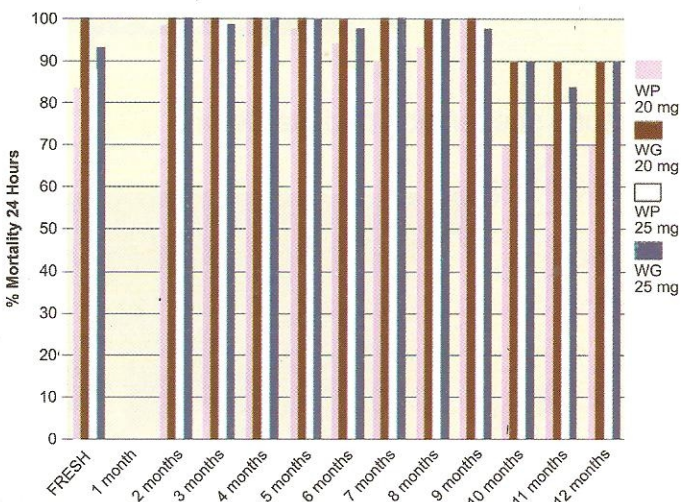
**Field Evaluation of K-Othrine WP 50 (5% deltamethrin WP) and K-Othrine WG 25 (25% deltamethrin water dispersible granules) as Residual Insecticides against Malaria Vectors - National Malaria Research Programme of Medical Research Council, S. Africa - 2001**



**Comparative Field Evaluation of K-Othrine WP & WG Vs Anopheles arabiensis**

Trials were conducted by MRC in South Africa by spraying newly constructed mud huts. The dose rate applied was 20 mg/m<sup>2</sup> of a.i. Bioassays were conducted at monthly intervals except at 5, 11, & 12 months using the standard WHO wall bioassay test with 30 minute exposure. The results show that the WG formulation out performed the standard WP formulation.

**Field Evaluation of K-Othrine WG against An. minimus by VBCD in Thailand**



Deltamethrin WG and WP formulations were sprayed onto wall surfaces at 2 application rates (20 & 25 mg/m<sup>2</sup> and evaluated over time using standard WHO Cone wall bioassay technique. The WG formulation was still effective after 10 months giving 90% kill at both dose rates. The WP at the same dose rates was less effective

**HOW TO USE K-OTHRINE 25 WG**

K-Othrine 25 WG may be applied using any sprayer designed for surface applications. Dilute K-Othrine 25 WG with water and apply as a coarse spray at the rate of 10 liters for every 200 square meters.

**USAGE TABLE**

INSECT	DILUTION RATE	
	K-Othrine 25 WG	Water
Mosquitoes	1 SACHET (25G)	10 Liters

**RECOMMENDED SPRAYING METHOD**

- ▶ Compression sprayers to WHO specification should be used, fitted with No. 8002 nozzles checked to discharge 760 ml spray per minute.
- ▶ Spray tip should be maintained 45cm from the surface, to give a spray swath 65-70cm wide.
- ▶ An area of 19m<sup>2</sup> should be covered in 1 minute, giving a target application rate of 1 liter per 20m<sup>2</sup>.
- ▶ Ensure that spray machine is working properly and is not leaking.
- ▶ Ensure that houses are properly prepared for spraying i.e. that foodstuffs and cooking utensils etc. are removed or properly covered.
- ▶ Ensure that occupants are outside during spraying and do not re-enter until spray deposit is dry.
- ▶ Do not spray rooms with sick or bed-ridden occupants.
- ▶ Dispose of empty containers by burning or burying.

**Authorized Dealer**