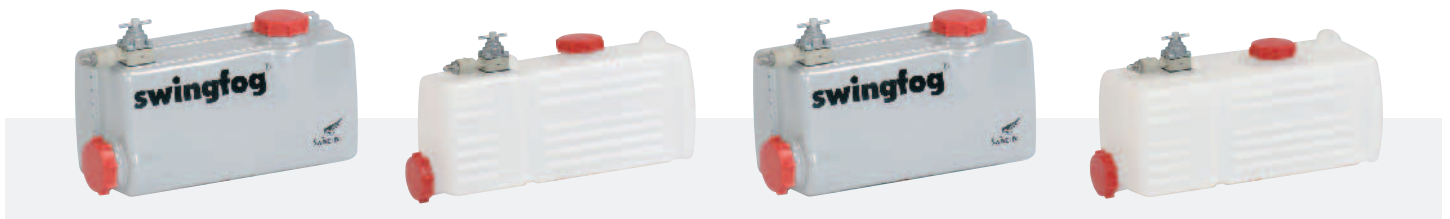


SN 50

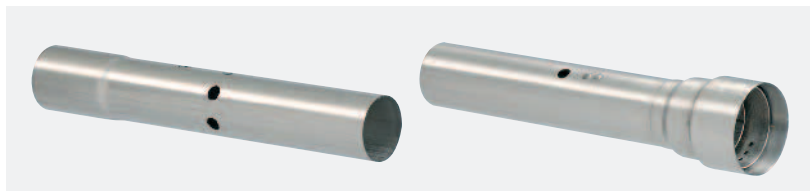


Chemical tank, stainless steel, capacity 6.5 l, SWINGFOG SN 50

Chemical tank, polyethylene, capacity 7 l, SWINGFOG SN 50 PE

Chemical tank, stainless steel, capacity 9 l, SWINGFOG SN 50-10

Chemical tank, polyethylene, capacity 10 l, SWINGFOG SN 50-10 PE



Standard fogging tube for oil- based fogging mixtures

High performance fogging tube for water-based fogging mixtures only

TECHNOLOGY FOR PROFESSIONALS

Swingfog – the optimal machines for Vector and Pest Control. Plant Protection in Greenhouses and Plantations. Disinfection in Food Processing and Animal Production. Stock Protection in Warehouses. Anti-Sprouting Treatment of Potatoes.





swingfog[®] + fontan[®]
QUALITY WINS



Technical data

Swingfog SN 50 (all versions)

Power, combustion chamber	18.7 kW/25.4 hp (16,100 kcal/h)			
Fuel tank	approx. 1.4 l			
Stainless steel, capacity	approx. 0.12 bar			
Feed pressure	standard grade petrol, leaded or unleaded, at least 74 octane			
Fuel	approx. 2 l/h			
Fuel consumption				
Chemical tank	<u>SN 50</u>	<u>SN 50 PE</u>	<u>SN 50-10</u>	<u>SN 50-10 PE</u>
Capacity	6.5 l	7.0 l	9.0 l	10.0 l
Feed pressure	approx. 0.3 - 0.35 bar (depending on dosage nozzle used)			
Ignition	electronic ignition coil, 4 dry batteries 1,5 V/ea. in series, negative on ground (optional accessory)			
Output (measured with water, approx.)	dosage nozzle 0.7	10 l/h		
	dosage nozzle 0.8	14 l/h		
	dosage nozzle 0.9	17.5 l/h		
	dosage nozzle 1.0	20.5 l/h		
	dosage nozzle 1.1	23.5 l/h		
	dosage nozzle 1.2	27 l/h		
	dosage nozzle 1.4	32 l/h		
	dosage nozzle 1.7	42 l/h		
Dimensions	SN 50/SN 50 PE:		133 x 29 x 33 cm	
	SN 50-10/SN 50-10 PE:		133 x 34 x 33 cm	
Weight (empty)	<u>SN 50</u>	<u>SN 50 PE</u>	<u>SN 50-10</u>	<u>SN 50-10 PE</u>
	8.75 kg	8.7 kg	9.1 kg	9.0 kg
Automatic cut-off device	all versions can also be supplied with factory-mounted cut-off device for the fogging mixture			
				
Special model Swingfog SN 50 A	special factory-mounted fog outlet to be introduced in very small holes in the ground (control of leaf-cutting ants) or in buildings			
available with all chemical tank versions with or without cut-off device				
Standard accessories	for all versions			
	fogging tube			
	dosage nozzles 0.8 / 1.0 / 1.2 (nozzle 1.0 already installed)			
	fuel funnel with strainer (mesh width 0.1 mm)			
	chemical funnel with strainer (mesh width 0.1 mm)			
	tool kit			
	cleaning equipment			
	set of spares (gaskets, O-rings, diaphragms)			
	carrying strap			
	ear protection (2 sets)			
	instruction manual including spare parts list			
Optional accessories	(available at extra charge)			
for all versions	Dosage nozzles			
	0.7 / 0.9 / 1.1 / 1.4 / 1.7			
High performance fogging tube (solely for water-based fogging mixtures)	to optimize the droplet spectrum, no deposits of larger drops in front of the unit			
Silencer	all versions			
Manometer set	for workshop use			

Subject to technical modifications.